



**TASK FORCE TIPS**  
FIRE FIGHTING EQUIPMENT

# MANUAL: LDH Hard Suction Hose

## INSTRUCTIONS FOR SAFE OPERATION AND MAINTENANCE

This instruction manual is intended to familiarize firefighters and maintenance personnel with the operation, servicing and safety procedures associated with TFT Suction Hose.

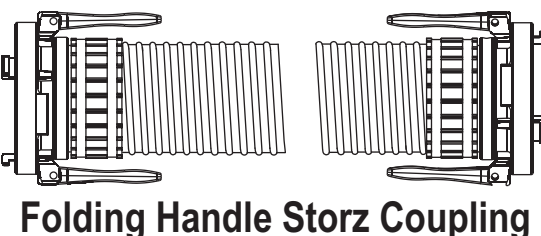
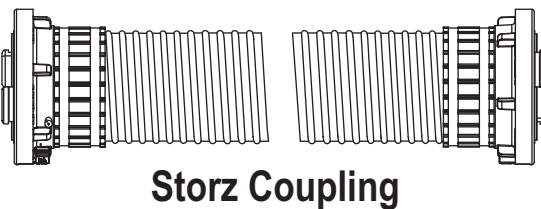
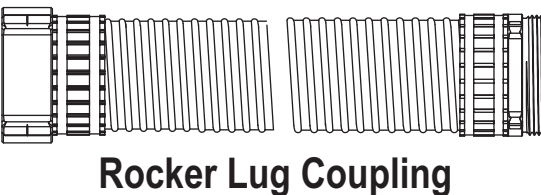
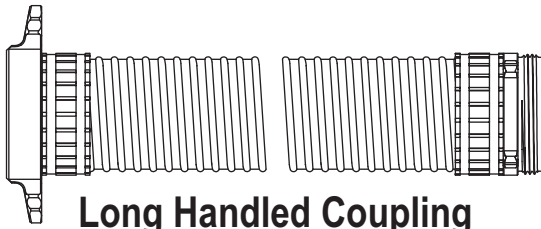
This manual should be kept available to all operating and maintenance personnel.

### ⚠ WARNING

Read instruction manual before use. Operation of this device without understanding the manual and receiving proper training is a misuse of this equipment. A person who has not read and understood all operating and safety instructions is not qualified to operate TFT Suction Hose.

### ⚠ WARNING

**SUCTION USE ONLY, DO NOT USE FOR PRESSURE SERVICE.  
DO NOT USE ON HYDRANT OR RELAY.**



### OPERATING RANGE:

Suction tested to 23 in Hg test  
11 psi vacuum (.8 bar vacuum)

### TEMPERATURE RANGE:

13°F to 158°F  
(-25°C to 70°C)

## ⚠ DANGER

### PERSONAL RESPONSIBILITY CODE

The member companies of FEMSA that provide emergency response equipment and services want responders to know and understand the following:

1. Firefighting and Emergency Response are inherently dangerous activities requiring proper training in their hazards and the use of extreme caution at all times.
2. It is your responsibility to read and understand any user's instructions, including purpose and limitations, provided with any piece of equipment you may be called upon to use.
3. It is your responsibility to know that you have been properly trained in Firefighting and /or Emergency Response and in the use, precautions, and care of any equipment you may be called upon to use.
4. It is your responsibility to be in proper physical condition and to maintain the personal skill level required to operate any equipment you may be called upon to use.
5. It is your responsibility to know that your equipment is in operable condition and has been maintained in accordance with the manufacturer's instructions.
6. Failure to follow these guidelines may result in death, burns or other severe injury.



Fire and Emergency Manufacturers and Services Association, Inc.  
P.O. Box 147, Lynnfield, MA 01940 • www.FEMSA.org


**TASK FORCE TIPS, Inc.** 3701 Innovation Way, Valparaiso, IN 46383-9327 USA  
MADE IN USA • www.tft.com 800-348-2686 • 219-462-6161 • Fax 219-464-7155

## 1.0 MEANING OF SAFETY SIGNAL WORDS

A safety related message is identified by a safety alert symbol and a signal word to indicate the level of risk involved with a particular hazard. Per ANSI standard Z535.4-1998 the definitions of the three signal words are as follows:

 **DANGER** indicates an imminently hazardous situation which, if not avoided, will result in death or serious injury.

 **WARNING** indicates a potentially hazardous situation which, if not avoided, could result in death or serious injury.

 **CAUTION** indicates a potentially hazardous situation which, if not avoided, may result in minor or moderate injury.

## 2.0 SAFETY

**⚠WARNING** This equipment is intended for use by trained personnel for firefighting. Its use for other purposes may involve hazards not addressed by this manual. Seek appropriate guidelines and training to reduce risk of injury.

**⚠WARNING** Kinks in supply hose may reduce water flow and cause injury or death to persons dependent on water flow. To avoid kinking, do not force hose below minimum inside bend radius or route hose across sharp corners. When this hose is used on a dry hydrant or fire truck, it is recommended that it be used with an elbow to minimize risk of kinking.

**⚠WARNING** Do not apply pressure to TFT Hard Suction Hose. This hose is designed for suction use **ONLY** and will leak or decouple under pressure. Leaking or decoupling will reduce water flow and could cause injury or death to persons dependent on it.

**⚠WARNING** Hose must be properly connected. Mismatched connectors or damage to the hose or connectors may cause leaking, which may prevent the pump from achieving or maintaining prime. Lack of water flow could cause injury or death to persons dependent on it.

## 3.0 CORROSION & USE WITH SALT WATER

All aluminum parts are hardcoat anodized and all fasteners are stainless steel for corrosion resistance. Occasional salt water use is permissible provided the hose is flushed with fresh water and disconnected after each use. The service life of the hose may not be shortened if the hose is flushed thoroughly. The effects of corrosion can be minimized by good maintenance practices. See Section 5.0 for maintenance.

## 4.0 INSTALLATION AND USE

TFT Hard Suction Hose is intended for fire department use as a pump intake water supply line in interior and exterior areas. This hose is intended for conveying water from open water sources such as dry hydrants, lakes, rivers and pools. This hose should not be used to deliver potable water.

TFT Hard Suction Hose is designed to be flexible, allowing easy connections to dry hydrants and pump intakes. As a result, the hose length decreases as vacuum is applied. The expected length variation is 1% per PSI (15% per BAR). Make connections to proper couplings on each end of the hose. To avoid kinking, do not exceed the minimum inside bend radius listed in the table below.

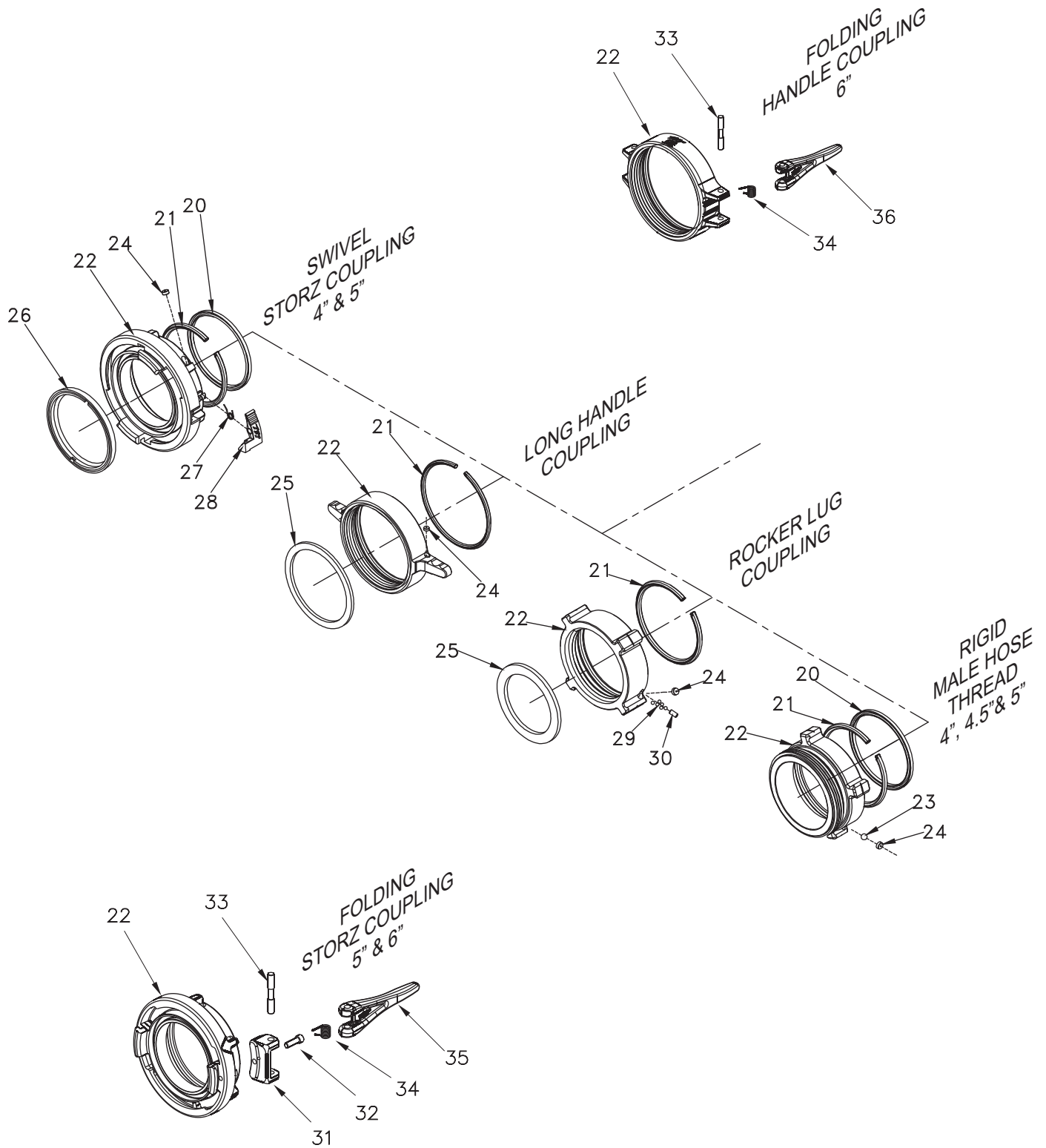
Minimum inside bend radius values given are for exterior hose surface closest to center of bend.

Hose diameter	Minimum inside bend radius at 72° F (22°C)
6" hose (150mm)	12.5" (32cm)
5" hose (125mm)	10.5" (27cm)
4" hose (100mm)	6" (15cm)
3" hose (75mm)	5.5" (14cm)

## 5.0 MAINTENANCE

This hose should be disconnected after each use, as well as cleaned and visually inspected inside and out at least once each month. Moving parts, such as couplings and levers, should be checked for smooth and free operation and lubricated with silicone-based grease to block moisture. Replace any missing or damaged parts before returning hose to service.

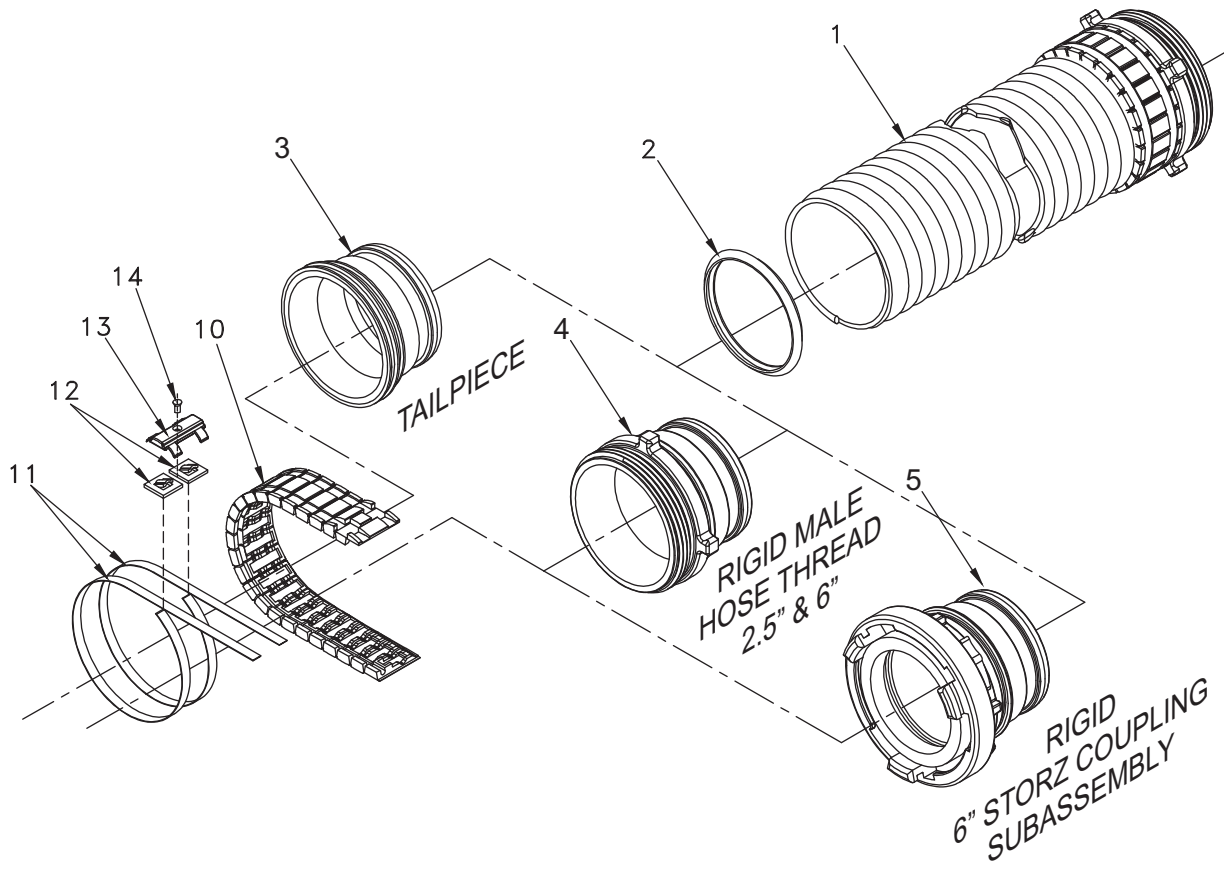
# 6.0 SUCTION HOSE COUPLINGS EXPLODED VIEW



## 6.0 SUCTION HOSE COUPLINGS PARTS LIST

#	DESCRIPTION	QTY	PART #
21	7.0" PLASTIC STRIP	1	A1290
	6.0" PLASTIC STRIP	1	A1293
	5.25" PLASTIC STRIP	1 OR 2	A1291
	4.25" PLASTIC STRIP	1 OR 2	A1292
22	SPOUT 5.0"NHM x PSF5.25	1	A4630N
	SPOUT 4.5"NHM x PSF5.25	1	A4625N
	SPOUT 4.0"NHM X PSF5.25	1	A4620
	COUPLING FOLD 6" NH	1	A4581NX
	COUPLING HNDL 6.0"NHF x PSF7.0-NFS	1	A4580
	COUPLING HNDL 5.0"NHF x PSF6.0A	1	A4573NT
	COUPLING HNDL 4.5"NHF x PSF6.0A	1	A4568NR
	COUPLING RL 5.0"NHF x PSF6.0A	1	A4673NT
	COUPLING RL 4.5"NHF x PSF6.0A	1	A4668NR
	COUPLING RL 4.0"NHF x PSF5.25A	1	A4663NP
	COUPLING RL 2.5"NHF x 3.0HSBGF	1	M307N
	COUPLING HEAD STORZ 5" X PSF5.25	2	A4135
	COUPLING HEAD STORZ 4" X PSF4.25	2	A4114
	COUPLING HEAD STORZ 5"	1	A4135H
COUPLING HEAD STORZ 6"	1	X696SX-FOLD	
23	7/16" SS BALL	1	VB.437
24	PORT PLUG	1	A1299
	LABEL; PORT COVER	1	A1298
25	6.0" GASKET HOSE COUPLING	1	V3240
	5.0" GASKET HOSE COUPLING	1	V3220
	4.5" GASKET HOSE COUPLING	1	V3210
	4.0" GASKET HOSE COUPLING	1	V3198
	2.5" GASKET HOSE COUPLING	1	V3190
26	5" GASKET SUCTION	2	A4221
	4" GASKET SUCTION	2	A4216
27	SPRING TORSION	2	A4230
28	5" LOCKING LEVER	2	A4176
	4" LOCKING LEVER	2	A4173
29	3/16" SS BALL (for 2.5" size only)	47	V2120
30	1/4-28 x 1/2 SOCKET SET SCREW CUP POINT (for 2.5" size only)	1	VT25-28SS500
31	HINGE BLOCK	2	A4264
32	long socket head cap screw 5/16-18 x 3/4	2	VT31-18SH750
33	PIVOT PIN	2	A4262
34	TORSION SPRING	2	A4263
35	STORZ HANDLE	2	A4261
36	COUPLING HANDLE	2	A4260

## 6.0 SUCTION HOSE EXPLODED VIEW



## 6.0 SUCTION HOSE PARTS LIST

#	DESCRIPTION	QTY	PART #
1	SUCTION HOSE 6" ID x 10'	1	A4800
	SUCTION HOSE 5" ID x 10'	1	A4850
	SUCTION HOSE 4" ID x 10'	1	A4900
	SUCTION HOSE 3" ID x 10'	1	A4950
2	6" V-SEAL RING	2	A4810
	5" V-SEAL RING	2	A4860
	4" V-SEAL RING	2	A4910
	3" V-SEAL RING	2	A4960
3	6" TAILPIECE PSM7.0	1	A4825
	5" TAILPIECE PSM6.0A	1	A4876
	5" TAILPIECE PSM5.25	1 OR 2	A4870
	4" TAILPIECE PSM5.25A	1	A4936
	4" TAILPIECE PSM5.25	1	A4930
	4" TAILPIECE PSM4.25	2	A4920
	3" TAILPIECE HSBGM30	1	A4970
4	6" TAILPIECE 6.0"NHM	1	A4835NX
	3" TAILPIECE 2.5"NHM	1	A4985NJ-1
5	6" TAILPIECE 6.0" STORZ W/LOCK	1	A4814.1
10	6" BINDING STRIP	2	A4840
	5" BINDING STRIP	2	A4890
	4" BINDING STRIP	2	A4940
	3" BINDING STRIP	2	A4990
11	1/2" BAND CLAMP	4	A4845
12	1/2" BUCKLE	4	A4846
13	BINDING STRIP CAP 5" & 6"	2	A4847
	BINDING STRIP CAP 3" & 4"	2	A4947
14	10-24 x 1/2 FLAT HEAD CAP SCREW	2	VT10-24FH500
20	CUP SEAL LOADED 5.25 x 4.75 x 1/4	1	A1596
	CUP SEAL 5.25 X 4.750 X 1/4	2	A1296
	CUP SEAL 4.25 X 3.750 X 1/4	2	A1297

## 7.0 WARRANTY

Task Force Tips, Inc., 2351 Industrial Drive, Valparaiso, Indiana 46383-9511 ("TFT") warrants to the original purchaser of its Hard Suction Hose ("equipment"), and to anyone to whom it is transferred, that the equipment shall be free from defects in material and workmanship during the five (5) year period from the date of purchase. TFT's obligation under this warranty is specifically limited to replacing or repairing the equipment (or its parts) which are shown by TFT's examination to be in a defective condition attributable to TFT. To qualify for this limited warranty, the claimant must return the equipment to TFT, at 2351 Industrial Drive, Valparaiso, Indiana 46383-9511, within a reasonable time after discovery of the defect. TFT will examine the equipment. If TFT determines that there is a defect attributable to it, TFT will correct the problem within a reasonable time. If the equipment is covered by this limited warranty, TFT will assume the expenses of repair. If any defect attributable to TFT under this limited warranty cannot be reasonably cured by repair or replacement, TFT may elect to refund the purchase price of the equipment, less reasonable depreciation, in complete discharge of its obligations under this limited warranty. If TFT makes this election, claimant shall return the equipment to TFT free and clear of any liens and encumbrances. This is a limited warranty. The original purchaser of the equipment, any person to whom it is transferred, and any person who is an intended or unintended beneficiary of the equipment, shall not be entitled to recover from TFT any consequential or incidental damages for injury to person and/or property resulting from any defective equipment manufactured or assembled by TFT. It is agreed and understood that the price stated for the equipment is in part consideration for limiting TFT's liability. Some states do not allow the exclusion or limitation of incidental or consequential damages, so the above may not apply to you. TFT shall have no obligation under this limited warranty if the equipment is, or has been, misused or neglected (including failure to provide reasonable maintenance) or if there have been accidents to the equipment or if it has been repaired or altered by someone else. THIS IS A LIMITED EXPRESS WARRANTY ONLY. TFT EXPRESSLY DISCLAIMS WITH RESPECT TO THE EQUIPMENT ALL IMPLIED WARRANTIES OF MERCHANTABILITY AND ALL IMPLIED WARRANTIES OF FITNESS FOR A PARTICULAR PURPOSE. THERE IS NO WARRANTY OF ANY NATURE MADE BY TFT BEYOND THAT STATED IN THIS DOCUMENT. This limited warranty gives you specific legal rights, and you may also have other rights which vary from state to state.

**TASK FORCE TIPS, Inc.** 3701 Innovation Way, Valparaiso, IN 46383-9327 USA  
MADE IN USA • [www.tft.com](http://www.tft.com) 800-348-2686 • 219-462-6161 • Fax 219-464-7155